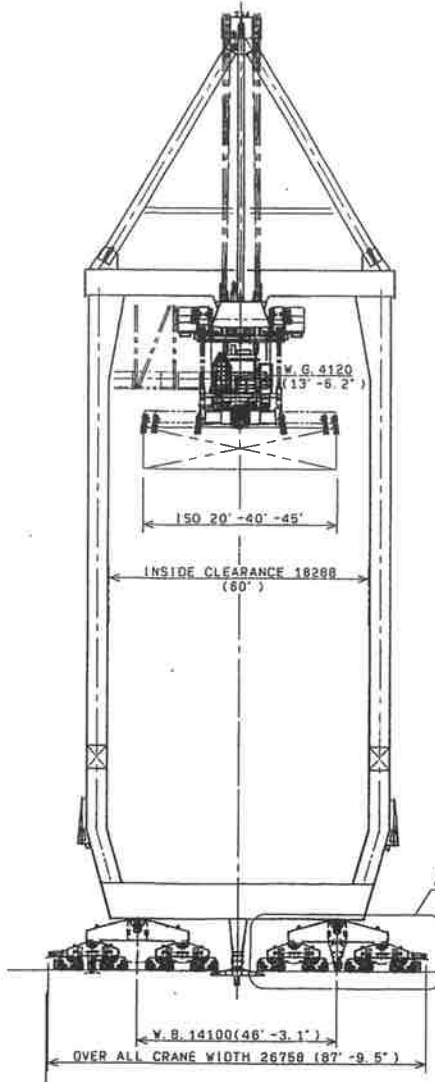
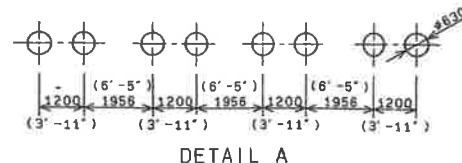


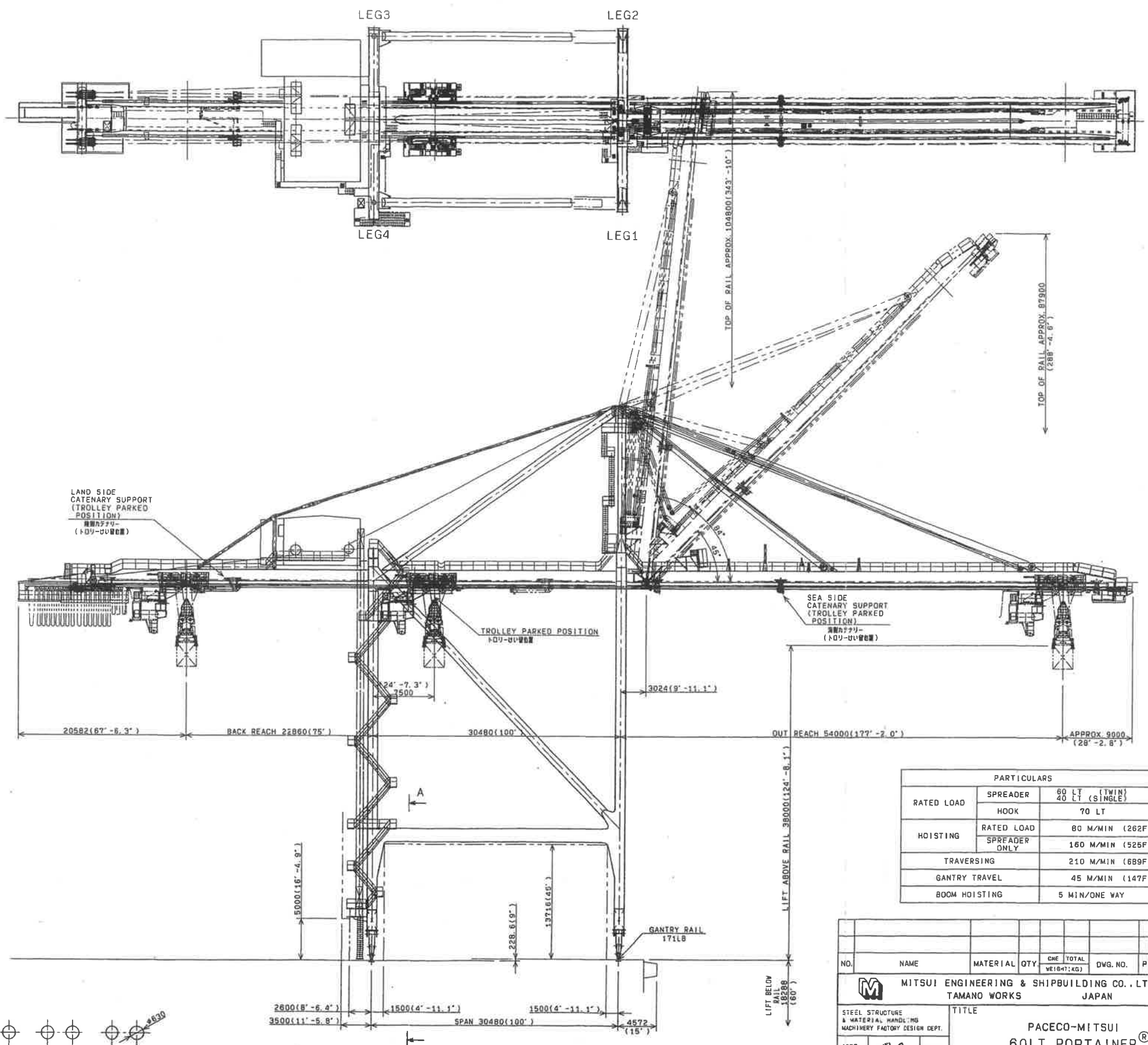
A - A



FRONT VIEW



DETAIL A



PARTICULARS		
RATED LOAD	SPREADER	60 LT (TWIN) 40 LT (SINGLE)
	HOOK	70 LT
HOISTING	RATED LOAD	80 M/MIN (262FPM)
	SPREADER ONLY	160 M/MIN (525FPM)
TRAVERSING		210 M/MIN (689FPM)
GANTRY TRAVEL		45 M/MIN (147FPM)
BOOM HOISTING		5 MIN/ONE WAY

NO.	NAME	MATERIAL	QTY	CNE TOTAL WEIGHT(KG)	DWG. NO.	P	REMARKS	KG
<p><b>MITSUI ENGINEERING &amp; SHIPBUILDING CO., LTD.</b> TAMANO WORKS JAPAN</p> <p><b>PACECO-MITSUI 60LT PORTAINER® GENERAL ARRANGEMENT 全体図</b></p>								
APPD.	岡田	9/13						
CHKD.	高井	9/13						
CHKD.	木下	9/2						
DRWN.	DEAS FUJII	02 8/29						
SCALE				1:250	DWG. NO.		1T020332	
CAMP ID				TT4211-00-110332.010,020,030,040,050	TRF. NO.		MAC1	
REL. NO.				000001	REL. REV.			

MACHINING TOLERANCES UNLESS NOTED OTHERWISE TO THE PROPERTY OF MITSUBISHI HEAVY INDUSTRIES, LTD. THE DATA ARE FOR INFORMATION ONLY. ALL RIGHTS RESERVED. LOANED OR REPRODUCED IN WHOLE OR IN PART, FOR ANY PURPOSE, WITHOUT A WRITTEN PERMISSION FROM MHI.