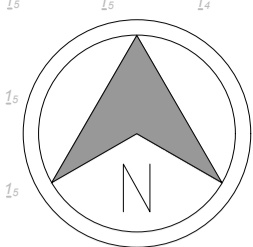
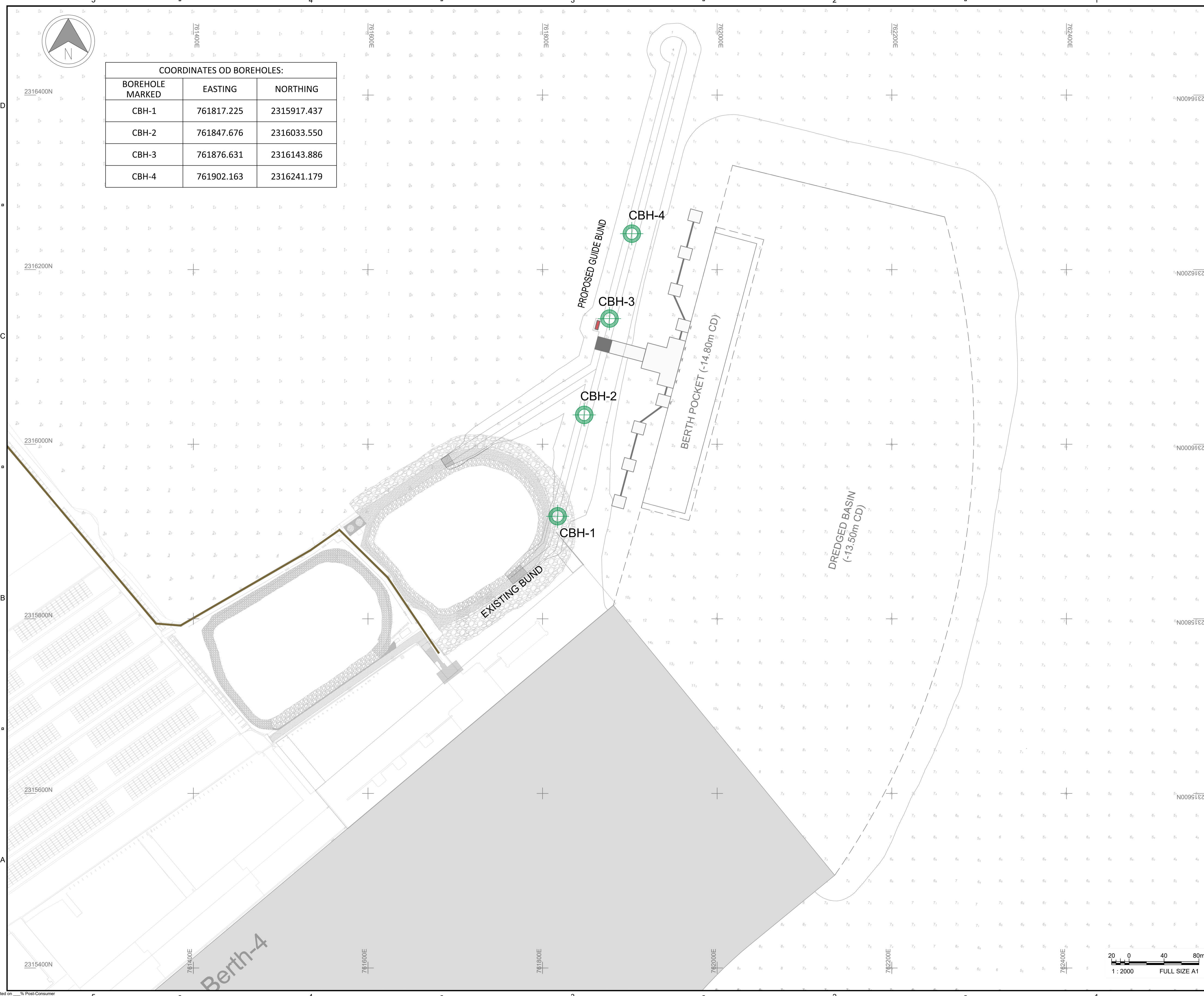


ISO A1 594mm x 841mm
 Approved: _____
 Checked: _____
 Designer: SV
 Project Management Initials: _____
 Last saved by: VERMAS/2023-10-31 | Last Plotted: 2023-10-31
 Filename: C:\VERMA\PROJECT\APMT-PIPAVAV\CBH\BOREHOLE-PROPOSED.DWG
 Printed on: _____ Post-Consumer



COORDINATES OD BOREHOLES:		
BOREHOLE MARKED	EASTING	NORTHING
CBH-1	761817.225	2315917.437
CBH-2	761847.676	2316033.550
CBH-3	761876.631	2316143.886
CBH-4	761902.163	2316241.179



- NOTES :-**
- 1 ALL DIMENSIONS ARE IN METERS UNLESS OTHERWISE SPECIFIED.
 - 2 ALL LEVELS ARE IN METERS UNLESS OTHERWISE SPECIFIED.
 - 3 ALL LEVELS ARE RELATED TO CHART DATUM (+0.0M).
 - 4 ALL COORDINATES ARE GIVEN IN METERS RELATING TO UTM PROJECTION, SPHEROID WGS 84 ZONE 42Q
 - 5 DEPTH OF ALL BOREHOLES 25M FROM EXISTING BED LEVEL.

REV.	DATE	DESCRIPTION	SV	AB	SS
R0	28.10.2023	ISSUED WITH REPORT			

REVISION DETAILS

OWNER: GUJARAT PIPAVAV PORT LTD

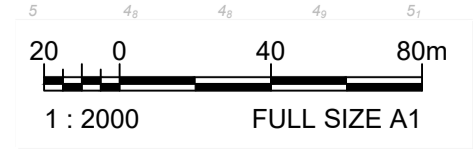
PROJECT: FEED ENGINEERING FOR NEW LIQUID JETTY-6

PART/DISCIPLINE: _____ DIMENSIONS ARE IN: _____

PURPOSE: TENDER

DRAWING TITLE: LOCATION PLAN OF BOREHOLES

DRAWING NUMBER: APMT-TD-DWG-GN-001	REV: 0
------------------------------------	--------



SHEET 01 OF 01